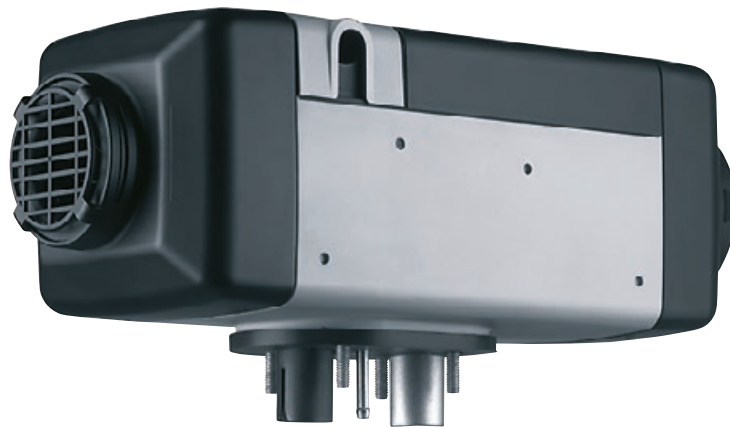


## Air Top air heaters

Air Top 2000 STC and Air Top Evo 40/55



The Webasto Air Top air heaters provide continuous heating power output via stepless modulation, ensuring constant cabin temperatures. The heater operates quietly and consumes very little electrical power and fuel.

A robust composite casing protects the unit against high temperatures or salt. Moreover sealed control electronics and connectors withstand the marine environment.

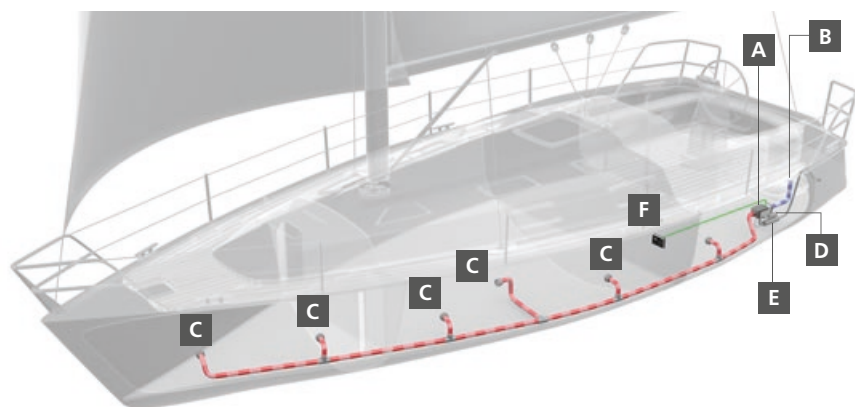
### **There is a wide range of different air heaters:**

The Air Top 2000 STC is the smallest air heater on the market. It offers excellent heat output and optimal economy. The Air Top Evo 40/55 are smart multi-mode heaters. High-performing, compact and quiet, the heaters are ideally suited for the most rigorous requirements. The Air Top Evo series can be upgraded with a sophisticated user interface to offer additional operations like ECO, boost and ventilation mode.

### **Key benefits at an glance:**

- Short heating-up times thanks to effective output
- Available as a complete installation kit for quick and simple retrofitting
- Dehumidification of the cabins
- Quiet-running
- Ideal for sailing and motor boats up to 40 feet
- Constant cosiness thanks to an electronic thermostat
- Low operating costs
- Meet current Marine requirements and standards
- Compact, space-saving design and simple to install

## Application concept



- A** Air heater
- B** Intake for fresh air from outside
- C** Outlets for even distribution of air
- D** Combustion-air intake
- E** Stainless steel exhaust
- F** Controls – simple and logical to use

## Technical Specifications

Model	Air Top 2000 STC	Air Top Evo 40	Air Top Evo 55
Heat output (kW) (BTU/h)	0.9 – 2.0 3,000 – 7,000	1.5 – 3.5 (4.0) 5,100 – 12,000 (13,600)	1.5 – 5.0 (5.5) 5,100 – 17,000 (18,800)
Fuel	Diesel	Diesel	Diesel
Fuel consumption (l/h)	0.12 – 0.24	0.18 – 0.43 (0.49)	0.18 – 0.61 (0.67)
Rated voltage (V)	12	12, 24	12, 24
Rated power consumption (W)	14 – 29	15 – 40 (55)	15 – 95 (130)
Dimension L x W x H (mm)	311 x 120 x 121	423 x 148 x 162	423 x 148 x 162
Net weight (kg)	2.6	5.9	5.9

## Controls



Multicontrol



ThermoCall App

### Available as an upgrade on all Webasto Air Top heaters

Multi mode operation to match your individual heating power demands:

- ECO mode for reduced electrical power consumption
- Boost mode for maximum heating power output
- Ventilation mode to provide fresh and cool air to your cabins on a hot day

- Easy connection of Webasto Telestart and ThermoCall possible
- Elegant design and easy operation
- Greater comfort with our innovative Webasto App: Run your air heater easily with your smartphone